

## A TOOL YOU CAN USE – A TOOL TO SAVE LIVES!

To many people, understanding the complexities of transportation safety can seem daunting. While the concept of moving people and goods safely from Point A to Point B may be simple, many factors are actually involved. One popular way to understand the nature of the factors is to describe them in terms of the four Es: enforcement, education, engineering, and emergency services. That these four concepts are so different points to the need for inter-disciplinary analysis of safety problems and strong cooperation among those responsible for each of the Es.



In recognition of this complexity, the Transportation Planner's Safety Desk Reference presents a range of multi-disciplinary strategies based on materials from the popular National Cooperative Highway Research Program (NCHRP) Report 500 series. These multi-disciplinary strategies are made relevant to planners by this new tool.

Planners will learn how to analyze crash and other safety related data to identify safety problems and develop appropriate strategies for planning-level documents and discussions. They will also learn how to foster coordination and collaboration among the engineering, emergency medical services, education, and enforcement communities.

In addition to providing general information, the Transportation Planner's Safety Desk Reference gets down to basics by outlining concrete solutions to transportation safety problems. The guide explains the roles of various stakeholders and helps planners understand their own role in transportation safety planning.

A few examples of steps recommended in the Desk Reference are:

- > Determining high crash locations, types, and contributing crash causes.
- > Identifying appropriate countermeasures to address these crashes.
- > Creating goals, objectives, and performance measures to manage the transportation system's safety performance.

The Desk Reference also provides tips and advice to planners on how to accomplish these tasks.

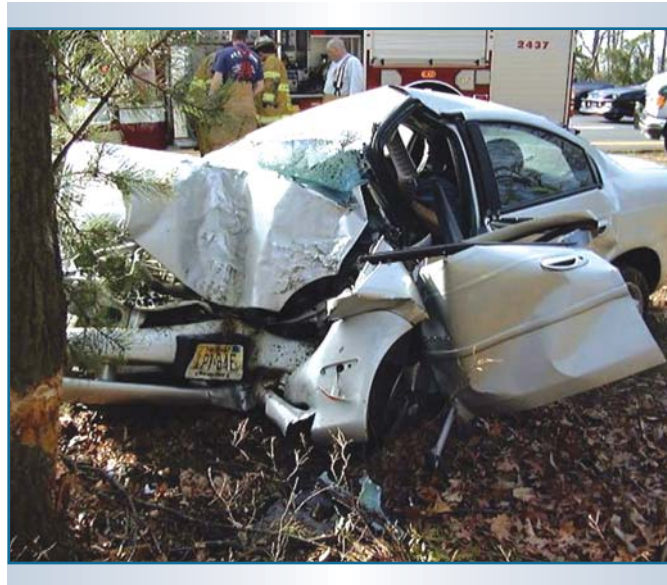


Photo Courtesy: AAA Foundation for Traffic Safety

Planners can refer to the Desk Reference for vital information on strategies that will improve safety in the following seventeen emphasis areas:

- > Older travelers
- > Pedestrian collisions
- > Aggressive driving
- > Unlicensed drivers
- > Signalized intersections
- > Unsignalized intersections
- > Run-off-the-road collisions
- > Head-on collisions
- > Horizontal curves
- > Tree collisions
- > Utility pole collisions
- > Occupant protection
- > Heavy truck collisions
- > Work Zone collisions
- > Drowsy or distracted driving
- > Rural emergency medical services
- > Alcohol involved collisions

TO DOWNLOAD A COPY OF THE DESK REFERENCE, VISIT THE TSPWG WEB SITE AT [HTTP://TSP.TRB.ORG](http://tsp.trb.org).

## A PLANNER'S APPROACH

The key to successfully incorporating safety into the transportation planning process is the active involvement of planners. Too often, transportation planners have lacked the tools to make the integration of safety into the planning process a reality.

To help remedy this need, the Transportation Safety Planning Working Group (TSPWG), comprised of transportation and safety representatives from multiple Federal agencies and national professional organizations, developed the Transportation Planner's Safety Desk Reference, with support from the Federal Highway Administration (FHWA).

“ This is a much needed resource for DOT and MPO transportation planners ”

- Tom Gerend,

*Assistant Director of Transportation*

*Mid-America Regional Council*

This single resource provides the latest information, techniques, and tools planners need to successfully incorporate safety into state and local transportation plans. It will also help planners meet the requirements of the Safe, Accountable, Flexible, Efficient Transportation Equity Act – A Legacy for Users (SAFETEA-LU), which elevated safety to a stand-alone planning factor.

Given the right tools, transportation planners can save lives! According to the National Highway Traffic Safety Administration, over 43,000 people in the United States die each year from motor vehicle crashes. More than 2.5 million people are injured, at a cost of more than \$230 billion annually. Please join your fellow planners in making safety a top priority in your transportation plan – the Desk Reference will show you how.

## TRANSPORTATION SAFETY PLANNING WORKING GROUP

American Association of Motor Vehicle Administrators  
American Association of State Highway Transportation Officials  
American Automobile Association  
American Planning Association  
American Public Works Association  
Association of Metropolitan Planning Organizations  
Community Transportation Association of America  
Federal Highway Administration  
Federal Motor Carrier Safety Administration  
Federal Transit Administration  
Governors Highway Safety Association  
Institute of Transportation Engineers  
International Association of Chiefs of Police  
National Association of County Engineers  
National Association of Development Organizations  
National Association of Regional Councils  
National Highway Traffic Safety Administration  
Society for the Advancement of Violence and Injury Research (SAVIR)  
Transportation Research Board

For more information visit:  
<http://tsp.trb.org>  
[www.fhwa.dot.gov/planning/SCP](http://www.fhwa.dot.gov/planning/SCP)  
<http://safety/fhwa.dot.gov>



## THE TRANSPORTATION PLANNER'S SAFETY DESK REFERENCE A SAFETY PRIMER FOR TRANSPORTATION PLANNERS



A publication of the Transportation Safety Planning Working Group with support from the Federal Highway Administration (FHWA)  
<http://tsp.trb.org>