

Business of Saving Lives

The Safety Problem Is Global
The Safety Solution
Is Local and
Personal



Discussion Points

- ◆ SHSP Requirement of *Highway Safety Improvement Program*
- ◆ National implementation efforts
- ◆ Tools for Life
- ◆ Enhancements underway to SHSP Guidance

A Strategic Highway Safety Plan ...

- ◆ Starts with the Planning Process.
- ◆ Provides a comprehensive, coordinated, continuing, communicative, focused, and unified approach.



What will a Strategic Highway Safety Plan do?

Bring together safety partners for a committed effort, with better communication and broader perspectives on reducing fatalities and serious injuries.

Encompass the 4 E's – engineering, enforcement, education and emergency medical system in safety strategies.

Focus the mission and limited resources.

Prioritize the plans of action

Identify emphasis areas based on crash data.

Document emphasis area's implemented strategies, proposed strategies and challenges that may be encountered implementing the new strategies.

Save Lives and Reduce Injuries



Characteristics

- ◆ Data driven
- ◆ Strategic
- ◆ Comprehensive
- ◆ Integrated
- ◆ Mission statement
- ◆ Vision statement
- ◆ Goals
- ◆ Prioritization of emphasis areas
- ◆ Targets
- ◆ Measurable success indicators
- ◆ Living document
- ◆ **ACCOUNTABILITY**



Key Elements

- ◆ Developed by DOT after consultation with prescribed safety stakeholders
- ◆ Analyzes and makes effective use of crash data
- ◆ Addresses 4 E's plus management and operations
- ◆ Considers safety needs of all public roads
- ◆ Describes program of projects or strategies to reduce or eliminate safety hazards
- ◆ Approved by State Governor or responsible State agency

In Consultation with ...

- ◆ Governor's Highway Safety Office
- ◆ Regional planning and MPO's
- ◆ Major Modes of Transportation
- ◆ State and Local Law Enforcement
- ◆ Highway/Grade-Crossing Safety
- ◆ Operation Lifesaver
- ◆ Motor Carrier Safety
- ◆ Department of Motor Vehicles

Other Major Safety Stakeholders

- ◆ Public Health Agencies
- ◆ Medical Community
- ◆ Emergency Response
- ◆ Highway Industry
- ◆ Railroad Industry
- ◆ Insurance Industry
- ◆ Hospitality Industry
- ◆ Motorcycle Community
- ◆ Judiciary
- ◆ Tribal Governments
- ◆ Academia
- ◆ Civic Organizations
- ◆ Safety Advocates
- ◆ State and Local Agencies



Emphasis Areas

- ◆ The data help point the direction.
- ◆ The data help prioritize actions.
- ◆ All States will have different ways.

- ◆ 22 AASHTO emphasis areas



The What

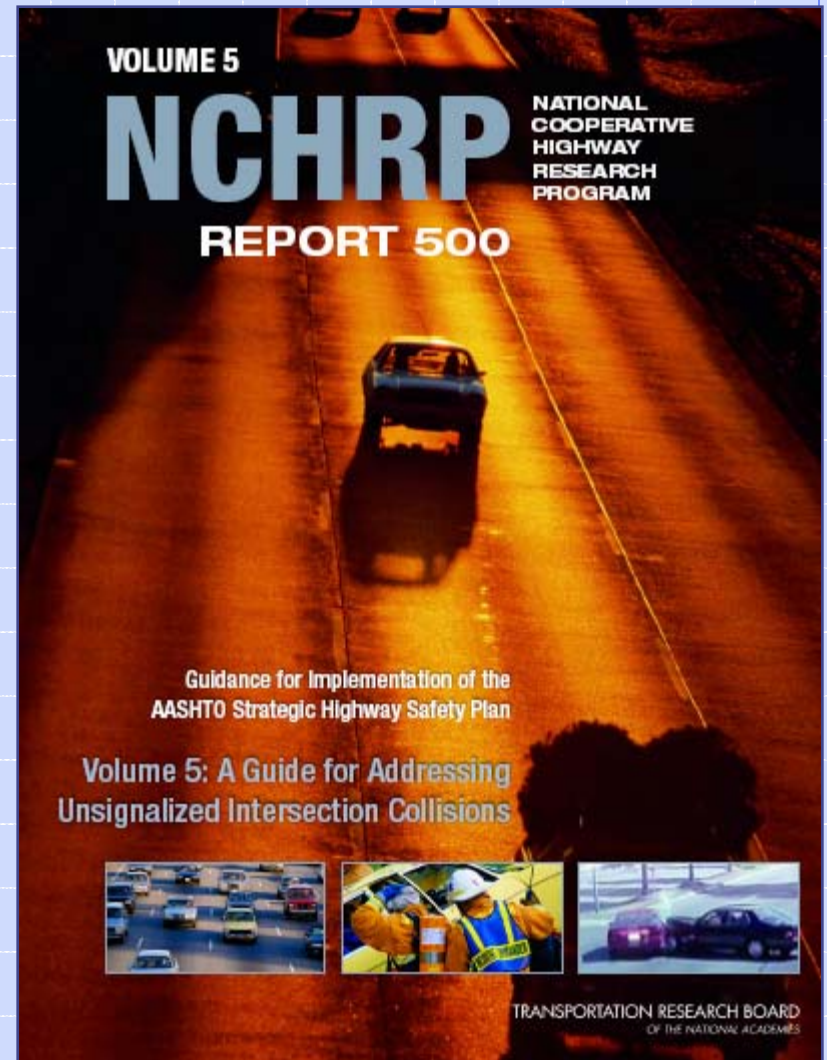
Factors Contributing to Fatal Crashes

- ◆ Roadway Departure - **59 %**
- ◆ BAC Related - **39 %**
- ◆ Unrestrained - **52%**
- ◆ Intersections - **22 %**
- ◆ Pedestrian - **11 %**



Gateways to Information

- ◆ **Website** for collecting and disseminating information on program development and effectiveness, and in-depth technical background; maintain currency of knowledge base.
- ◆ **Printed Guides** for developing programs to address fatal crashes



The Process

- ◆ Gain a broad constituency through champions – Accountability.
- ◆ Convene a “Safety Summit.”
- ◆ Form a Coalition.
- ◆ Establish a Charter demonstrating coalition commitment.
- ◆ Analyze available Data and determine Goals.

The Process

- ◆ Identify critical highway safety improvement opportunities.
- ◆ Identify strategies and countermeasures.
- ◆ Establish targets and time frames.
- ◆ Leverage resources across stakeholders.
- ◆ Provide a continuing forum to improve highway safety.

The Guidance

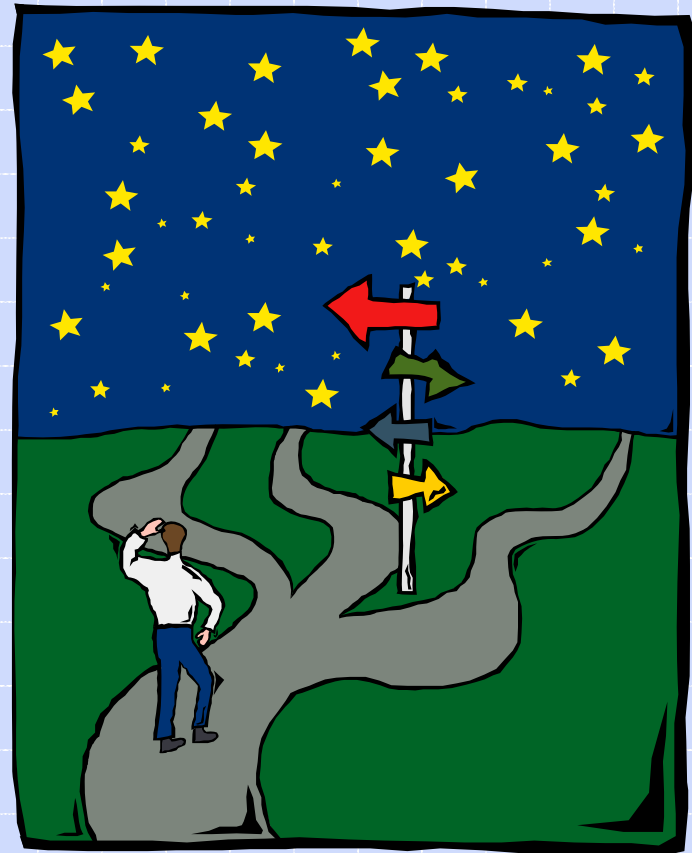
- ◆ Implementing an SHSP
- ◆ Evaluating the SHSP
- ◆ Approval
- ◆ New Appendixes:
 - Glossary and Template
 - Safety Stakeholders/Partners list
 - Relationship between Safety Planning and SHSP

Other Guidance Under Development

- ◆ SHSP Process “Checklist”
- ◆ Training compendium
- ◆ Funding Eligibility/Flexibility Matrix

How Do We Get There?

- ◆ No "one size fits all."
- ◆ Every State UNIQUE.
- ◆ Process to fit needs.
- ◆ Similarities between successful ventures.

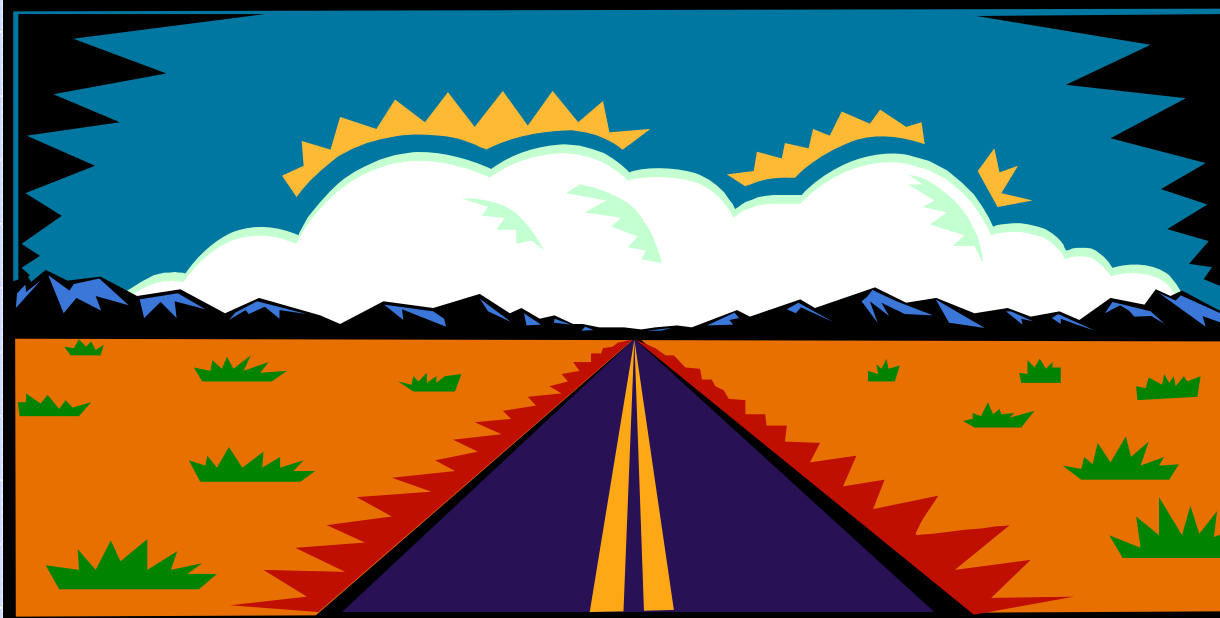


Key Elements

- ◆ Leadership/Champion
- ◆ Communication/Understanding
- ◆ Data
- ◆ Resources
- ◆ Partnerships/Buy-in
- ◆ Performance Measures
- ◆ Accountability
- ◆ Determination and Perseverance



Join the Journey to Save Lives



Contact Information

Rudolph M. Umbs, P. E.
FHWA, Office of Safety
Washington DC, 20590
202-366-2177

<http://safety.fhwa.dot.gov>